

# H2 Isodynamic Headphones

•RINARO•

Rinaro is a progressive audio company with over 30 years of research and development experience in the field of planar magnetics & isodynamics.

Through groundbreaking advancements in technology and carefully considered design, we've developed the most advanced planar magnetic headphone in the world.

Introducing the H2

•RINARO•



## THE H2

### A new wave in planar magnetics

At its core the H2 holds the world's most advanced isodynamic driver, **Ellion™**. Delivering unrivalled sound clarity, this **efficient driver** has five innovative patents applied to it.

With a highly detailed, **perfectly balanced** sound signature, it makes these headphones **truly unique** within the audio market.

## THE H2

# A headphone of unparalleled design & comfort

The H2 has been meticulously designed to provide the perfect listening experience.

By combining **ergonomics** with **detailed design** and **premium materials** we have created one of the **lightest** and most comfortable headphones in the planar magnetic market. Guaranteeing endless hours of listening pleasure.



# Zero compromises

**INNOVATIVE TECHNOLOGY**  
5 patents pending

**ERGONOMICS & COMFORT**  
Designed for prolonged listening sessions

**OUTSTANDING ACOUSTICAL TRANSPARENCY**  
Highly detailed, perfectly balanced sound signature

**10 YEAR WARRANTY**  
Built to last



**LIGHTWEIGHT & EFFECTIVE**  
335g & 102dB / 2,62Pa  
(1mW/1KHz)

**POWERFUL**  
Maximum SPL is over 129dB

**LUXURY MATERIALS**  
Stainless steel, aluminium & premium leather



**DETACHABLE CABLES**  
Standard 2.5mm jack connection



## MATERIALS

A new benchmark for luxury in the audiophile headphone market

All of our premium materials have been meticulously selected for their acoustic performance, comfort and durability.

Pittards™ WR100X soft **lambskin leather**, alongside the highest-grade cold rolled **stainless steel** (X10CrNi18-8) and **aircraft-grade aluminium** work together to produce the first truly audiophile grade headphone that looks as good as it sounds.

## ERGONOMICS

### Unlocking endless hours of listening pleasure

Utilizing lightweight materials and **weighing just 335g** means listeners can enjoy music to its fullest in maximum comfort.

The H2's **perfectly balanced construction** rests lightly and comfortably on the head, with unique sprung steel rods tuned to spread pressure evenly.

A suspended headband and removable soft foam ear cushions contribute to a design that provides **elevated listening experiences.**





## QUALITY & DURABILITY

### Our 10 year promise

We've selected the highest-grade materials and considered **structural strength** from the outset to make the H2 a headphone for life.

By working with specialist manufacturing partners we have completed 2 years of mechanical development & prototyping.

With twice the required **durability testing** and high-grade assembly methods, we proudly offer the H2 with a **10-year warranty**.





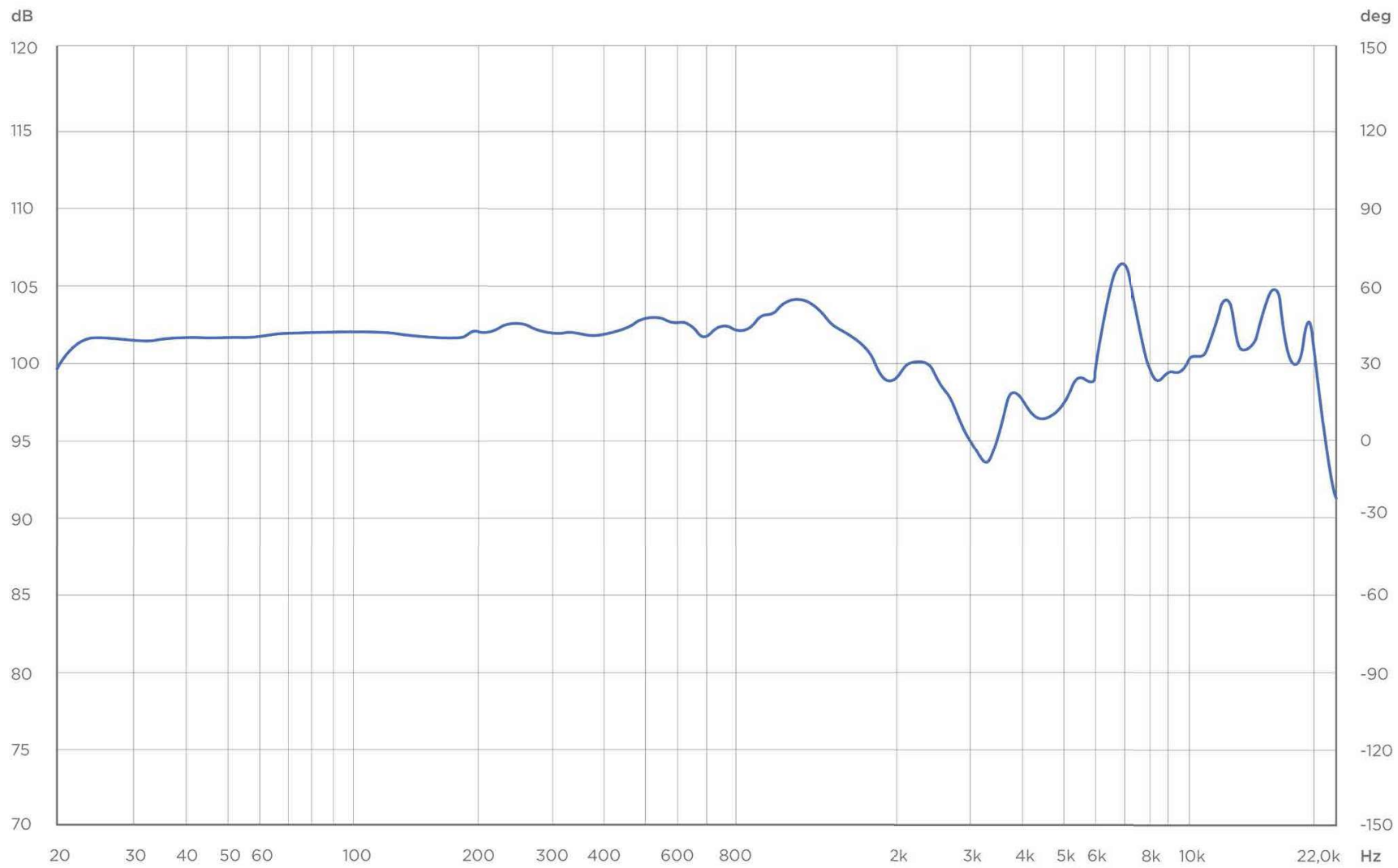
# Measurements

•RINARO•

## H2 Technical Specifications

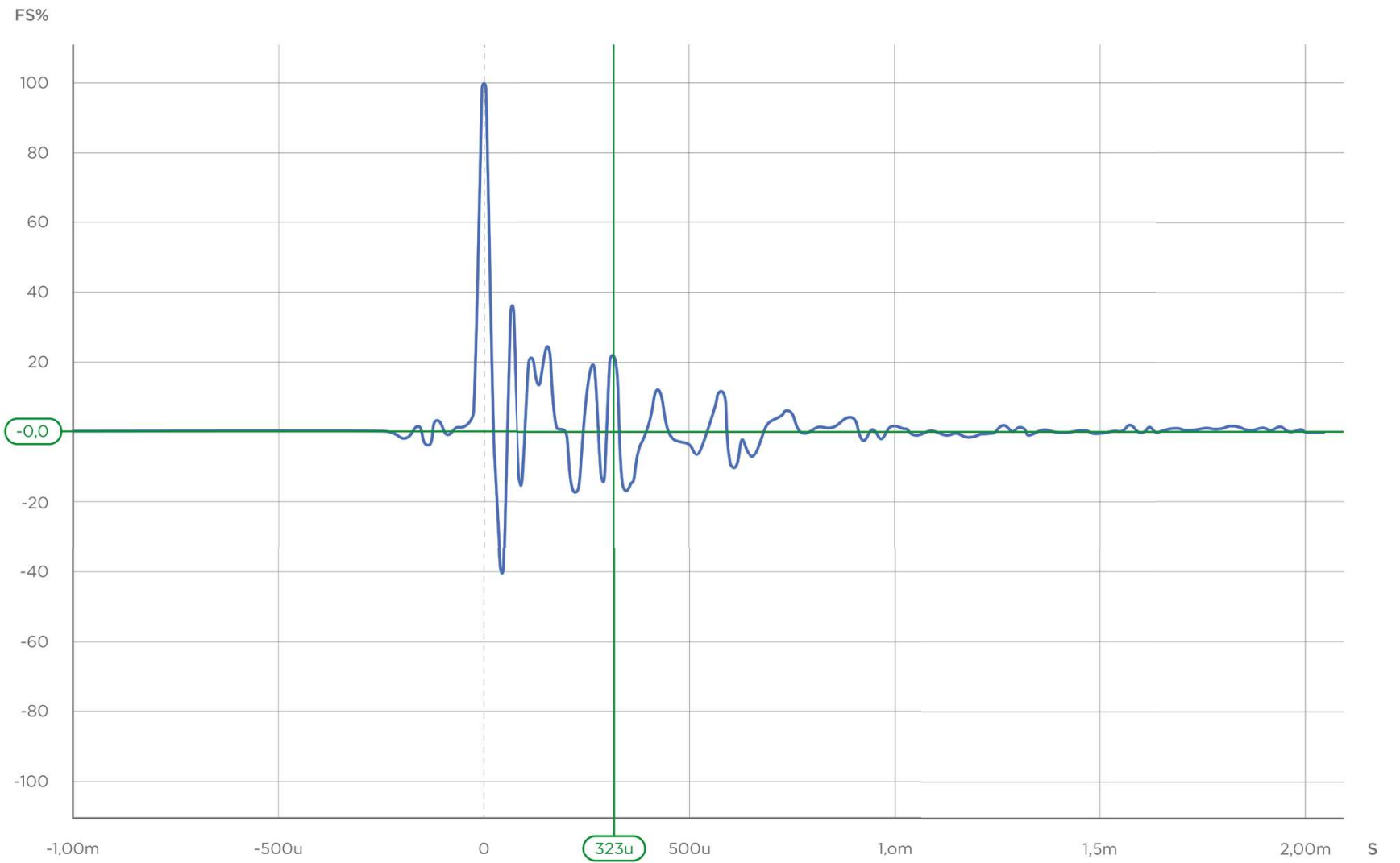
|  |  |
|--|--|
| <b>Driver type</b>                         | Superelliptical isodynamic   |
| <b>Operating principle</b>                 | Open   |
| <b>Ear coupling</b>                        | Circumaural  |
| <b>Frequency response</b>                  | 5 - 103,000Hz  |
| <b>Frequency response tolerance</b>        | +/- 1,5dB (100Hz-10kHz)  |
| <b>Nominal impedance</b>                   | 25 $\Omega$  |
| <b>Nominal sound pressure level</b>        | >102 dB (1 mW/1kHz)  |
| <b>Total harmonic distortion (THD)</b>     | <0,3 % (1 mW/500Hz)<br><0,1 % (1 mW/1kHz)<br><0,05 % (1 mW/3kHz)<br><0,03 % (1 mW/10kHz) |
| <b>Rated power</b>                         | 300mW  |
| <b>Long term max input power (EN60-26)</b> | 500mW  |
| <b>Maximum sound pressure level</b>        | >129dB   |
| <b>Weight without cable</b>                | 335g   |

1/12 octave smoothing, 1mW / Bruel & Kjaer Artificial Ear Type 4153



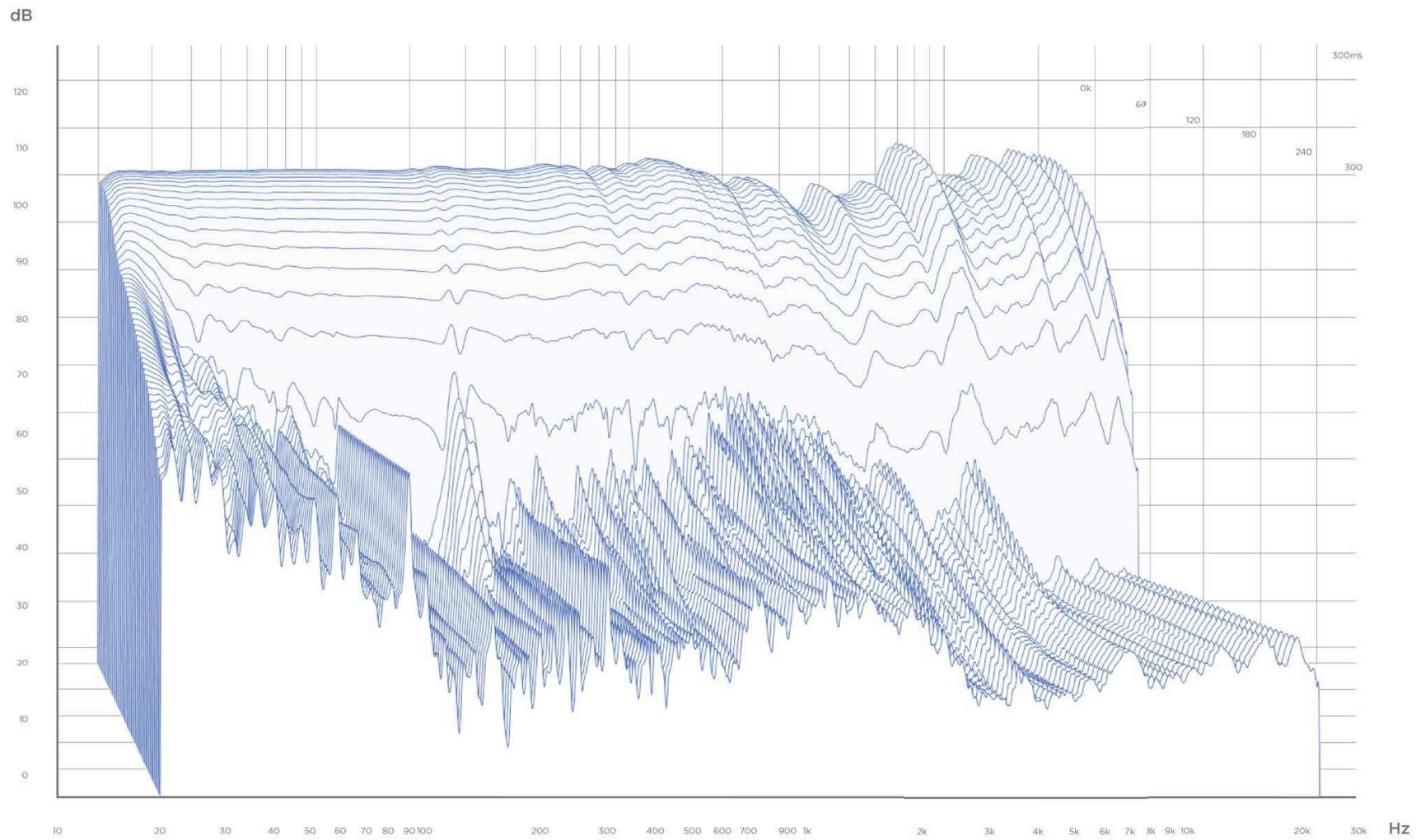
FREQUENCY RESPONSE

1mW / Bruel & Kjaer Artificial Ear Type 4153



IMPULSE RESPONSE

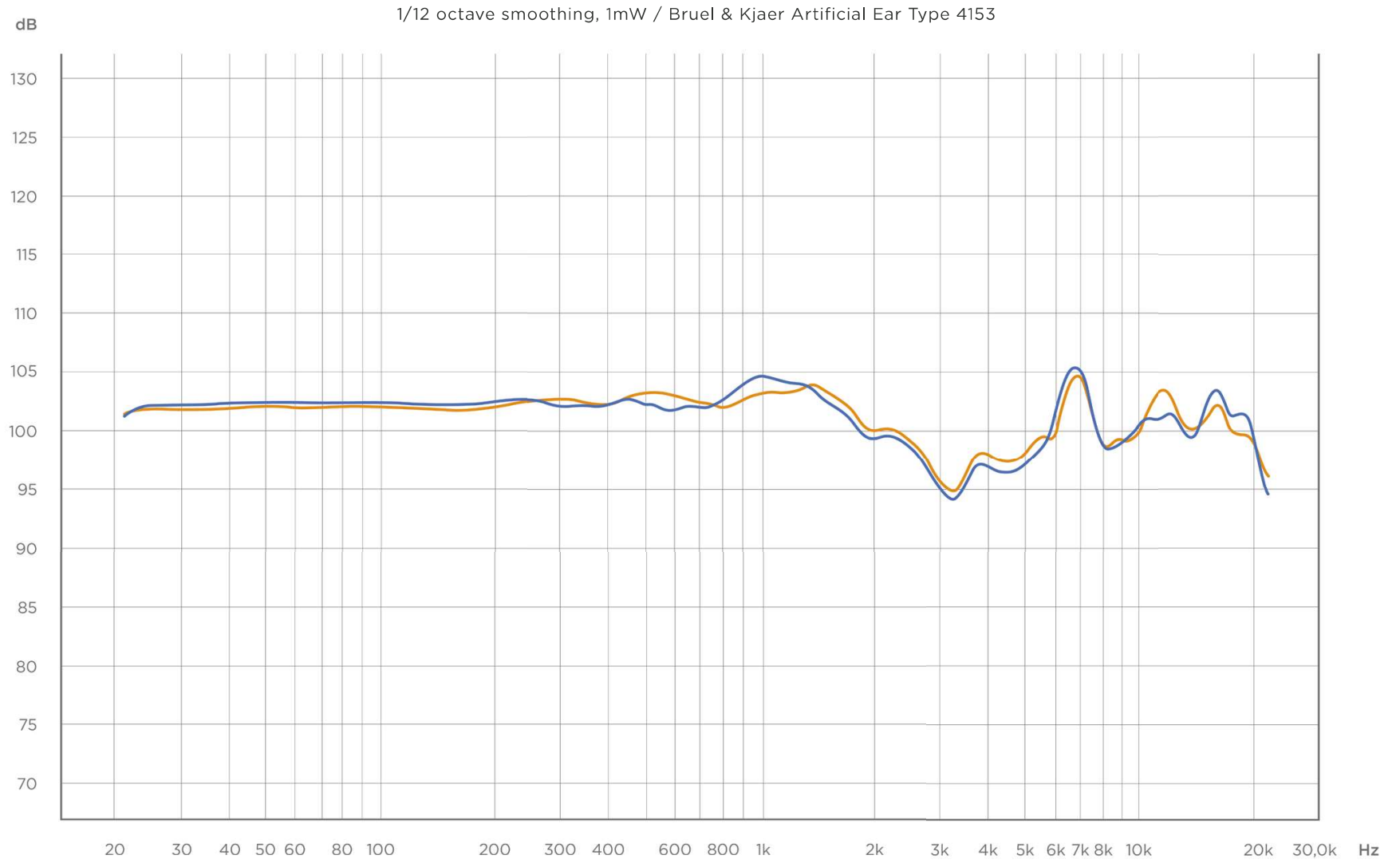
1/12 octave smoothing, 1mW / Bruel & Kjaer Artificial Ear Type 4153



WATERFALL

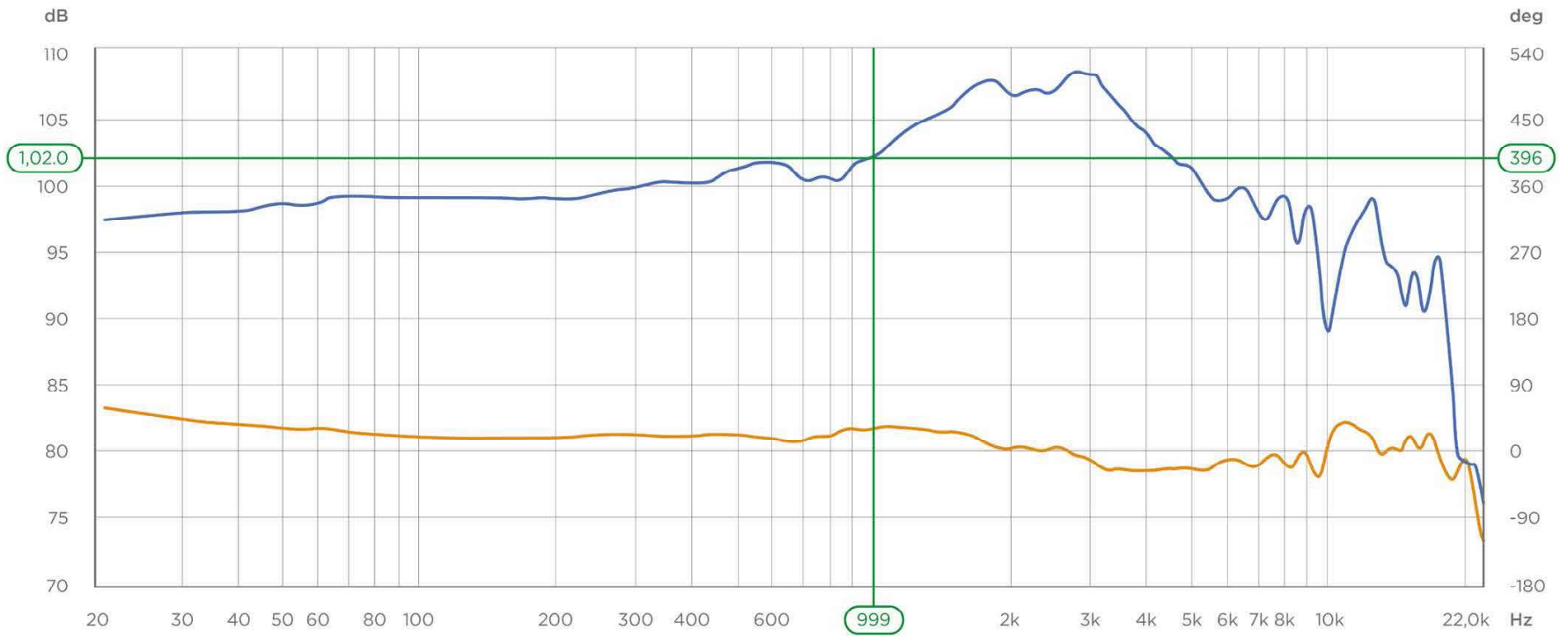
FREQUENCY RESPONSE TOLERANCE (L/R)

- Left
- Right



- SPL
- Phase

1/12 octave smoothing, 1mW / Bruel & Kjaer Head and Torso Simulator (HATS) Type 4128



SPL & PHASE